

**CTSO Antibody (N-term)**  
**Affinity Purified Rabbit Polyclonal Antibody (Pab)**  
**Catalog # AP12765a****Specification**

---

**CTSO Antibody (N-term) - Product Information**

Application	IHC-P, WB,E
Primary Accession	<a href="#">P43234</a>
Other Accession	<a href="#">NP_001325.1</a>
Reactivity	Human
Host	Rabbit
Clonality	Polyclonal
Isotype	Rabbit IgG
Antigen Region	69-98

**CTSO Antibody (N-term) - Additional Information****Gene ID** 1519**Other Names**

Cathepsin O, CTSO, CTSO1

**Target/Specificity**

This CTSO antibody is generated from rabbits immunized with a KLH conjugated synthetic peptide between 69-98 amino acids from the N-terminal region of human CTSO.

**Dilution**

IHC-P~~1:10~50

WB~~1:1000

E~~Use at an assay dependent concentration.

**Format**

Purified polyclonal antibody supplied in PBS with 0.09% (W/V) sodium azide. This antibody is purified through a protein A column, followed by peptide affinity purification.

**Storage**

Maintain refrigerated at 2-8°C for up to 2 weeks. For long term storage store at -20°C in small aliquots to prevent freeze-thaw cycles.

**Precautions**

CTSO Antibody (N-term) is for research use only and not for use in diagnostic or therapeutic procedures.

**CTSO Antibody (N-term) - Protein Information****Name** CTSO**Synonyms** CTSO1

**Function** Proteolytic enzyme possibly involved in normal cellular protein degradation and turnover.

**Cellular Location**

Lysosome.

**Tissue Location**

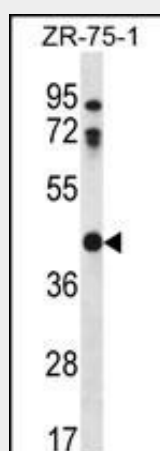
Expressed in all tissues examined. High levels seen in the ovary, kidney and placenta while low levels seen in thymus and skeletal muscle

**CTSO Antibody (N-term) - Protocols**

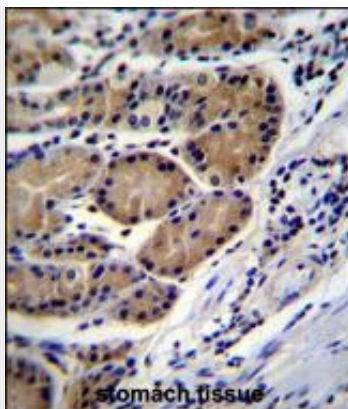
Provided below are standard protocols that you may find useful for product applications.

- [Western Blot](#)
- [Blocking Peptides](#)
- [Dot Blot](#)
- [Immunohistochemistry](#)
- [Immunofluorescence](#)
- [Immunoprecipitation](#)
- [Flow Cytometry](#)
- [Cell Culture](#)

**CTSO Antibody (N-term) - Images**



CTSO Antibody (N-term) (Cat. #AP12765a) western blot analysis in ZR-75-1 cell line lysates (35ug/lane). This demonstrates the CTSO antibody detected the CTSO protein (arrow).



CTSO Antibody (N-term) (Cat. #AP12765a) immunohistochemistry analysis in formalin fixed and paraffin embedded human stomach tissue followed by peroxidase conjugation of the secondary antibody and DAB staining. This data demonstrates the use of CTSO Antibody (N-term) for immunohistochemistry. Clinical relevance has not been evaluated.

#### **CTSO Antibody (N-term) - Background**

The protein encoded by the gene is a cysteine proteinase and a member of the papain superfamily. This proteolytic enzyme is involved in cellular protein degradation and turnover. The recombinant form of this enzyme was shown to degrade synthetic peptides typically used as substrates for cysteine proteinases and its proteolytic activity was abolished by an inhibitor of cysteine proteinase.

#### **CTSO Antibody (N-term) - References**

Roeske, D., et al. Mol. Psychiatry (2009) In press :  
Lamesch, P., et al. Genomics 89(3):307-315(2007)  
Santamaria, I., et al. Genomics 53(2):231-234(1998)  
Shi, G.P., et al. FEBS Lett. 357(2):129-134(1995)  
Velasco, G., et al. J. Biol. Chem. 269(43):27136-27142(1994)